



आधुनिक रेल डिब्बा कारखाना ,रायबरेली
MODERN COACH FACTORY, RAEBARELI
(Personnel Department)

कार्यालय,
महाप्रबंधक (कार्मिक),
आरेडिका, रायबरेली-229120

NOTE

Sub: Conduct of Departmental examination through Computer Based Test (CBT)-regarding constitution of Selection Committees and Question Paper Setter.

Ref: Railway Board's letter no.E(NG)I/2025/PM1/3 Dated 28.07.2025.
(RBE No.75/2025).

Copy of Railway Board's letter No. E(NG)I/2025/PM1/3 dated 28.07.2025 (along with its enclosures) regarding Conduct of Departmental examination through Computer Based Test (CBT, is annexed herewith for kind information & necessary action please.

DA:- As above.

No. MCF-RBL0PERS(POLY)/I/2024-O/o DY CPO/MCF

Date: .08.2025

**Assistant Personnel Officer/Staff
For General Manager (P)**

Copy to: For kind information please:

1. Secy. to GM/MCF/RBL
2. All PHODs/HODs, Dy. HODs/MCF/RBL
3. The General Secretary, OBC & SC/ST Association/MCF/RBL
4. Ch.OS/NG-I,NG-II,NG-III,Ch.OS(Cor.),Ch.OS/MPP& All Dealer /P. Branch/MCF/RBL.
5. All Notice Board of shop Floor/MCF/RBL
6. PS to PCPO for uploading on MCF website please.

भारत सरकार/GOVERNMENT OF INDIA
रेल मंत्रालय/MINISTRY OF RAILWAYS
(रेलवे बोर्ड/RAILWAY BOARD)
New Delhi

No. E(NG)I/2025/PM1/3

Dated 28.07.2025

The General Manager (P),
All Zonal Railways/PUs.
(As per standard mailing list)

Sub: Conduct of Departmental examination through Computer Based Test (CBT) – regarding constitution of Selection Committees and Question Paper Setter.
Ref: Board's letter No. E(NG)I/2022/PM1/36 dated 08.02.2024 (RBE No. 11/2024) & Board's letter of even no. dated 26.05.2025 (RBE No. 47/2025)

It has come to the notice of the Board that certain practical difficulties are apprehended by some of the Railways regarding the implementation of instructions contained in Board's letter dated 26.05.2025 concerning departmental selections through Computer Based Test (CBT).

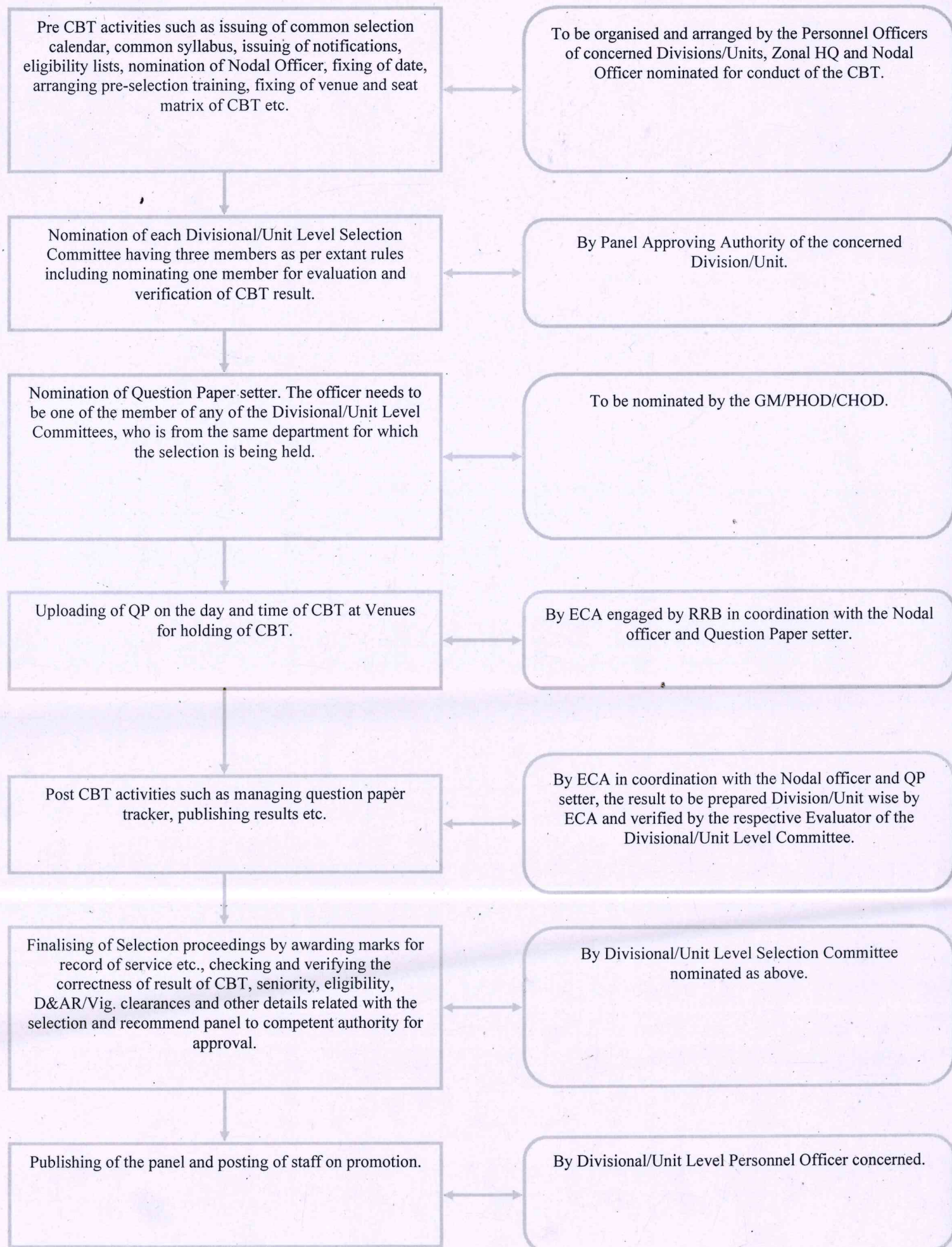
2. Some Railways have raised concerns about the stipulation in RBE 47/2025 that the **Question Paper Setter** would be one of the three members of an appropriate selection committee of Zonal/Unit level.
3. The Board has examined the matter and a Flowchart of activities involved in the centralised format of CBT and Division/Unit wise format of CBT is being enclosed for easier appreciation of the process of CBT.

All Railways/PUs may take action accordingly.

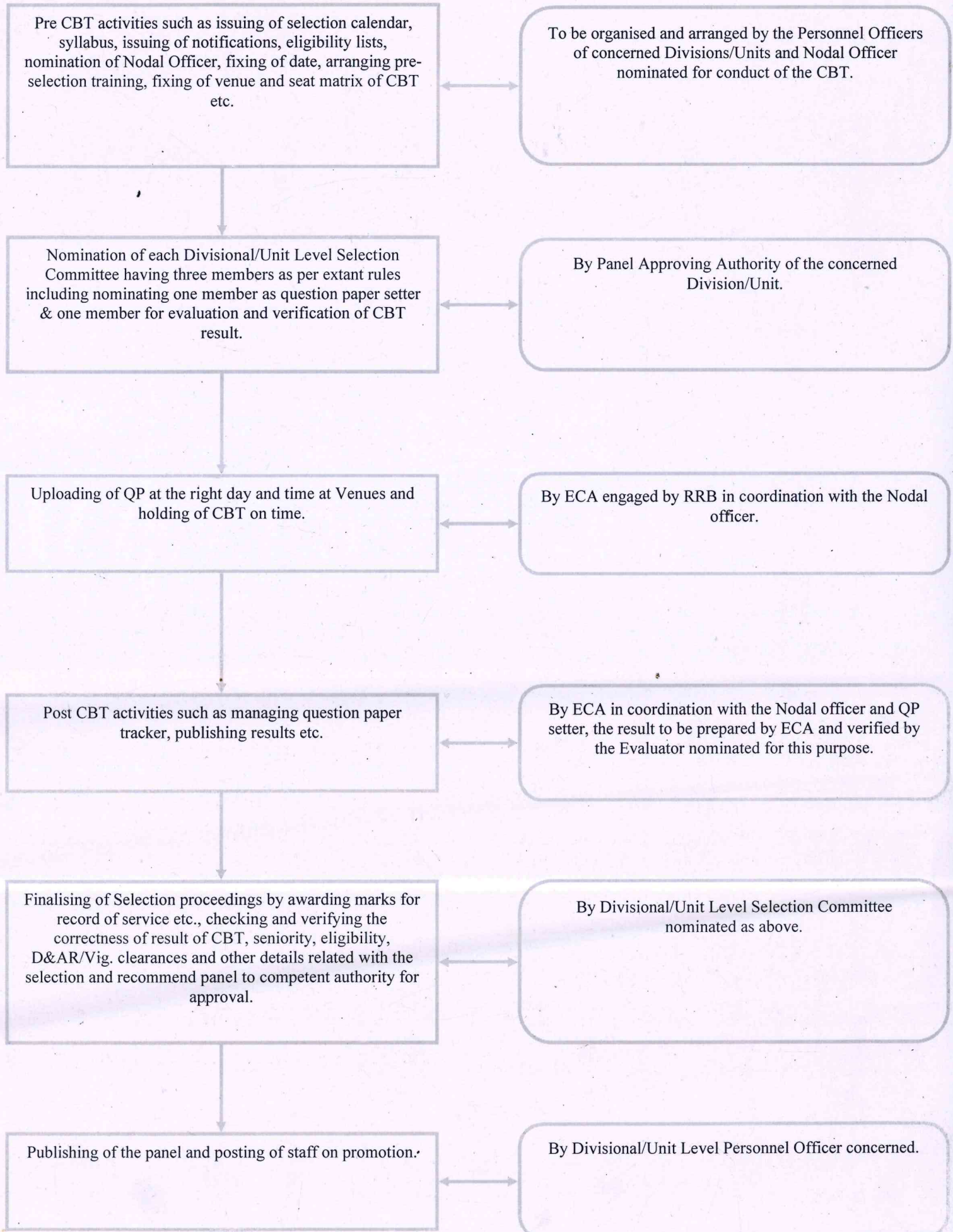
Enclosure: As above.


(Ajay Goyal)
Deputy Director-III/E(NG)I
Railway Board
E-mail: ajay.2097123@gov.in
Ph. No. 47224/011-23047224

FLOW CHART (ANNEXURE to Railway Board's letter No. E(NG)/I/2025/PM1/3, dated: 28.07.2025) OF ACTIVITIES IN CENTRALISED CBT AT ZONAL LEVEL



FLOW CHART (ANNEXURE to Railway Board's letter No. E(NG)I/2025/PM1/3, dated: 28.07.2025) OF ACTIVITIES IN CBT AT DIVISION/UNIT LEVEL



No. E(NG)I/2025/PM 1/3

New Delhi, dated 28.07.2025

Copy forwarded to:-

1. The General Secretary, AIRF, Room No.253, Rail Bhawan, New Delhi (35 copies).
2. The General Secretary, NFIR, Room No.256-E, Rail Bhawan, New Delhi (35 copies).
3. All Members/Departmental Council & National Council & Secretary/Staff Side, National Council, 13-C, Ferozeshah Road, New Delhi (60 spares).
4. The Secretary General, FROA, Room No.256-A, Rail Bhawan, New Delhi (5 spares).
5. The Secretary General, IRPOF, Room No.268, Rail Bhawan, New Delhi (5 spares).
6. The Secretary, RBSS Group 'A' Officers Association, Rail Bhawan, New Delhi.
7. The Secretary, RBSS Group 'B' Officers Association, Rail Bhawan, New Delhi.
8. The Secretary, Railway Board Ministerial Staff Association, Rail Bhawan, New Delhi.
9. The Secretary, Railway Board Group 'D' Employees Association, Rail Bhawan, New Delhi.
10. The Secretary, Railway Board Promotee Officers Association, Room No.341-C, Rail Bhawan, New Delhi.
11. Chief Commissioner of Railway Safety, Lucknow.
12. General Secretary, All India SC&ST Railway Employees Association, Rail Bhawan, New Delhi.

ASL
28.7.25

for PED(IR)/Railway Board

Advisor/MR, PSs/MoSR(S), MOSR (R), EDPG/MR, OSD/MR, OSD/Coord/MR

PPSs to Chairman & CEO, M(F), M(Infra), M(T&RS), M(O&BD), Secretary, DG/HR, DG/RHS and DG/RPF.

PPSs to AM(Comml.), AM(CE), AM(C&IS), AM(Elec.), AM(Budget), AM(F), AM(Mech.), AM(Plg.), AM(Project), AM(PU), AM(Sig.), AM(Stores), AM(Tele), AM(Traffic), AM(Works), AM(T&C), AM(Staff), AM(HR), PED(Vig.) and PED(Infra.).

PSs to ED/Safety(M), EDCE(G), ED(E&R), EDE, EDE(N), EDME(W), EDERS(G), EDE(Res.), EDE(RRB), EDF(B), ED(RE), ED/Track(M), EDF(X)I, EDF(X)II, ED(H), EDE(GC), ED(Stat), ED(Track/MC), EDME(Chg.), EDME(Traction), ED(Works), EDME(Dev.), EDRS(C), EDRS(W), EDPC, EDF(E), EDA, EDV(A), JS(G) and IG/RPF.

DPC-II, DE(G), D(IH), D(H&FW), D(MPP), DE(N)II, DE(R), DE(D&A), DE(LL), JD(OL), JDE(Rep), JDE(RRB), DD(Code Revision), DDE(LR)I, DDE(LR)II, DDE(LR)III, DDV(A&P), DD(OL)I, E(NG)II, E(Rep)I, E(Rep)II, E(Rep)III, E(SCT)I, E(SCT) II, E(RRB), PC-III, PC-IV, PC-V, E(P&A)I, E(P&A)II, CE-I, CE-II, CE-III, Sec.(E), Sec.(ABE), E(MPP), Safety Branch, A/C-III and Code Revision Cell.

रेल भवन, नई दिल्ली-110001, Rail Bhawan, New Delhi-110001